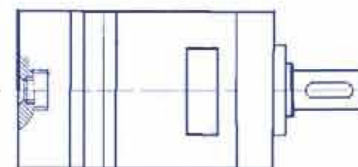


HYDRAULIC MOTORS

ORDER CODE	TYPE	DISPLACEMENT CC/REV	MAX SPEED	MAX TORQUE (da Nm)	MAX OIL FLOW Lt/Min	MAX INLET PRESSURE (bar)	LIST PRICE
MAM008	8	8.2	1950	1.1	16	140	128.44
MAM012	12	12.9	1550	1.6	20	140	130.59
MAM020	20	20	1000	2.5	20	140	132.75
MAM032	32	31.8	630	4.0	20	140	134.90
MAM040	40	40	500	4.1	20	140	144.20
MAM050	50	50	400	4.5	20	140	161.28

SERIES MAM

Shaft - d.16 without flange

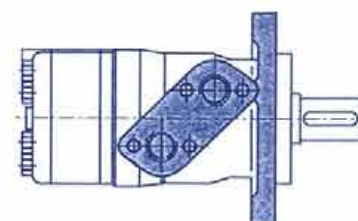


ORDER CODE	TYPE	DISPLACEMENT CC/REV	MAX SPEED	MAX TORQUE (da Nm)	MAX OIL FLOW Lt/Min	MAX INLET PRESSURE (bar)	LIST PRICE
MAP040	40	37.7	1510	6.4	60	140	107.05
MAP050	50	49.5	1210	7.9	60	175	110.18
MAP080	80	79.2	755	13.2	60	175	114.40
MAP100	100	99	605	16.4	60	175	116.92
MAP125	125	123.8	486	20.5	60	175	118.50
MAP160	160	158.4	378	26.4	60	175	122.97
MAP200	200	198	303	26.5	60	175	124.60
MAP250	250	247.5	242	27.6	60	175	127.78
MAP315	315	316.8	190	29	60	175	128.91
MAP400	400	396	150	28.5	60	175	134.40
MAP500	500	495	120	32.5	60	140	138.77
MAP630	630	623	95	36	60	140	144.51

SERIES MAP

Shaft -d.25 flange - SAE A

(Also available in imperial shafts)

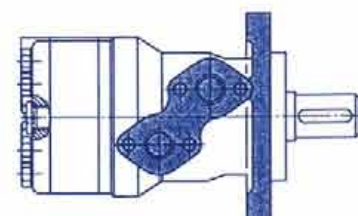


ORDER CODE	TYPE	DISPLACEMENT CC/REV	MAX SPEED	MAX TORQUE (da Nm)	MAX OIL FLOW Lt/Min	MAX INLET PRESSURE (bar)	LIST PRICE
MAR050	50	51.5	800	10	40	175	136.51
MAR080	80	80.3	750	19.6	60	175	140.50
MAR100	100	99.8	600	24.2	60	175	143.11
MAR125	125	125.7	480	27.1	60	175	147.30
MAR160	160	159.6	375	38.9	60	175	151.13
MAR200	200	199.8	300	38.5	60	175	156.40
MAR250	250	250.1	240	38.8	60	175	160.36
MAR315	315	315.7	190	38.5	60	175	164.95
MAR400	400	397	150	35.5	60	175	170.90

SERIES MAR

Shaft - d.25 flange - SAE

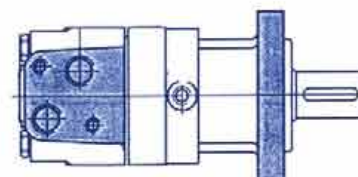
(Also available in imperial shafts)



ORDER CODE	TYPE	DISPLACEMENT CC/REV	MAX SPEED	MAX TORQUE (da Nm)	MAX OIL FLOW Lt/Min	MAX INLET PRESSURE (bar)	LIST PRICE
MAS080	80	80.5	810	20	65	210	232.45
MAS100	100	100	750	25	75	210	236.40
MAS125	125	125.7	600	32	75	210	241.87
MAS160	160	159.7	470	34	75	210	245.93
MAS200	200	200	375	40	75	210	249.97
MAS250	250	250	300	45	75	210	264.80
MAS315	315	314.9	240	54	75	210	278.15
MAS400	400	397	185	58	75	210	290.90

SERIES MAS

Shaft - d.32



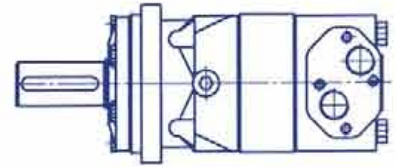
FOR MOTORS TYPE MAM, MAP, MAR, MAS, MAT, MAV

1. Max, intermittent speed and max. intermittent pressure drop must not occur simultaneously.
2. Recommended filtration is per ISO cleanliness code 20/16. A nominal filtration of 25 micron or better.
3. Recommend using a premium quality, anti-wear type mineral based hydraulic oil.
4. Recommended minimum oil viscosity 13cSt at nominal operating temperatures.
5. Recommended maximum system operating temperature is 82°C.
6. To assure optimum motor life fill with fluid prior to loading and run at moderated loads and speed for 15-30 minutes.

HYDRAULIC MOTORS

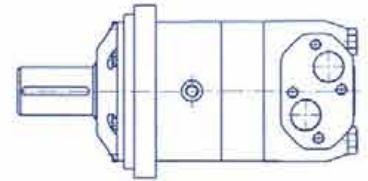
ORDER CODE	TYPE	DISPLACEMENT CC/REV	MAX SPEED	MAX TORQUE (da Nm)	MAX OIL FLOW Lt/Min	MAX INLET PRESSURE (bar)	LIST PRICE
MAT160	160	161.1	625	47	100	210	332.45
MAT200	200	201.4	625	59	125	210	368.80
MAT250	250	251.8	500	73	125	210	376.20
MAT315	315	326.3	380	95	125	210	394.11
MAT400	400	410.9	305	108	125	210	409.20
MAT500	500	523.6	240	122	125	210	418.12
MAT630	630	619.8	206	123	125	210	464.23
MAT800	800	801.00	185	146	125	210	484.04

SERIES MAT
SHAFT d40
FLANGE SAE.C



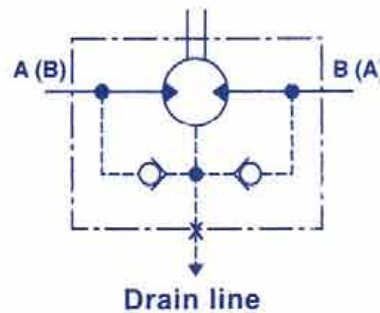
ORDER CODE	TYPE	DISPLACEMENT CC/REV	MAX SPEED	MAX TORQUE (da Nm)	MAX OIL FLOW Lt/Min	MAX INLET PRESSURE (bar)	LIST PRICE
MAV315	315	314.5	510	92	160	210	436.41
MAV400	400	400.9	500	118	200	210	452.57
MAV500	500	499.6	400	146	200	210	482.21
MAV630	630	629.1	315	166	200	210	520.45
MAV800	800	801.8	250	188	200	210	586.45

SERIES MAV
SHAFT d50



maxima®

Separate catalogue available on request



CROSS LINE RELIEF VALVE

ORDER CODE	THREAD	Q MAX l/min.	P MAX BAR	LIST PRICE
CP40DD (OMP/R)	1/2"	60	300	56.20
CP60DD (OMS)	1/2"	60	300	54.81
CP80DD (OMT)	3/4"	100	300	66.97

